

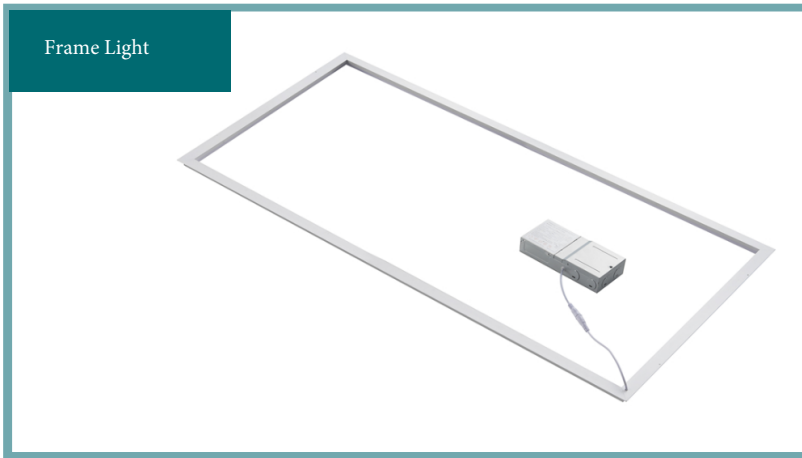
ECO Series Frame Light

Prefix: EFL



The Eco Series LED Frame Light Fixture family has been developed to dramatically improve energy efficiency and quality of light using Solid State Lighting (SSL) technologies. The Eco Frame Light Series LED provide an attractive, energy efficient architectural look which has been specifically designed to replace existing fluorescent lighting or for use in new construction. Comfortable, low glare, uniform lighting is attributed to this style of fixture. Typical applications for this type of product are interior spaces where finished ceilings and walls exist. Applications include:

- Commercial/Corporate Office Spaces
- Retail Spaces, Public Spaces and Airports
- Schools, Colleges and Universities
- Hospitals, Government Facilities and Military Bases



project:

fixture type:

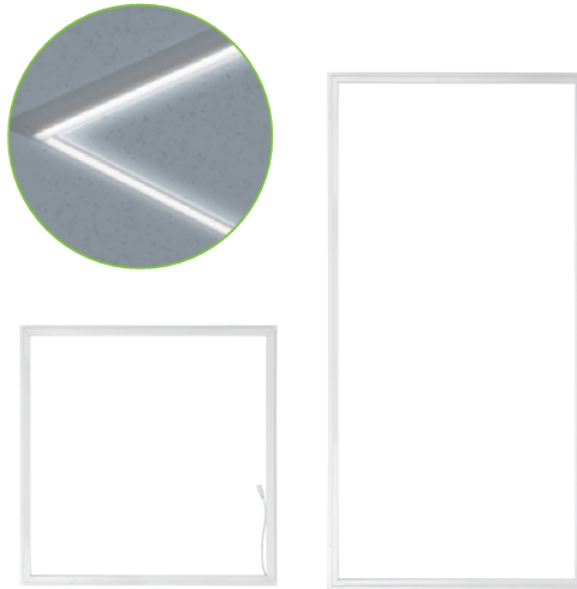
catalog #:

quantity:

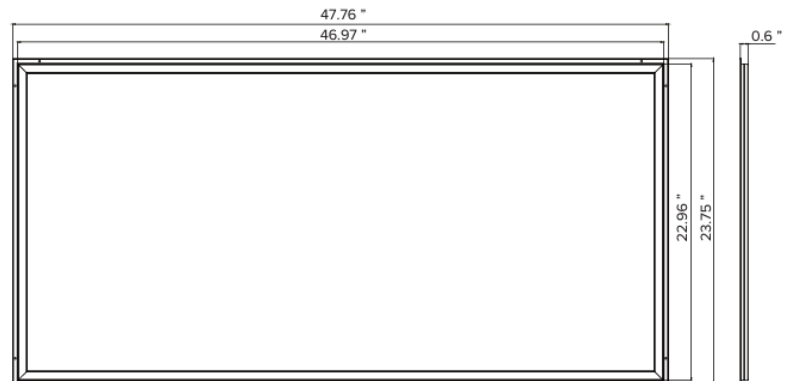
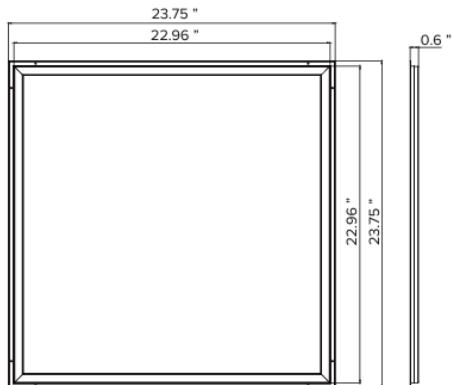
ORDERING GUIDE

EFL	-	N	-	LFKS	-	UNV	-	DM	-	AF	-
PREFIX/SERIES	SIZE	OPTICS (DISTRIBUTION)	LUMEN OUTPUT*	DRIVER VOLTAGE	DRIVER TYPE	COLOR TEMP.	CRI	LENS (DIFFUSER)	FIXTURE OPTIONS		
EFL - Eco Frame Light Series	22-2x2 24-2x4	N - Normal	LFKS - Field selectable 2x2' 2x4' L025 (20w) L050 (40w) L038 (30w) L063 (50w) L050 (40w) L075 (60w)	UNV - Universal Voltage (120v - 277v) (50/60 Hz)	DM- 0-10v Low Voltage Dimming (10% - 100%)	Blank-Field Selectable 30K/35K 40K/50K/65K	Blank-80CRI	AF - Frosted Linear PMMA Lens (Standard)	SCK-Suspended Canopy Kit		

LFKS = Field Selectable Delivered Lumens
2x2 = 2500(20w)/3800(30w)/5000lms(40w)
2x4 = 5000(40w)/6300(50w)/7500lms(60w)



Fixture Dimensions



CONSTRUCTION

- FRAME comes in 2x2, and 2x4 options, offering a sleek, modern look with top-notch functionality
- Wattage and CCT selectable reduce your stock SKU
- Cutting-edge optical tech, it matches the lighting specs of traditional LED panels

INSTALLATION

- Fixture is suitable for recessed mounting with T-bar
- Suspended installation

WARRANTY

- 5-Year limited warranty. Please refer to RENOVA's website at www.renova.com/sales/warranties for the latest warranty terms and conditions.

ELECTRICAL

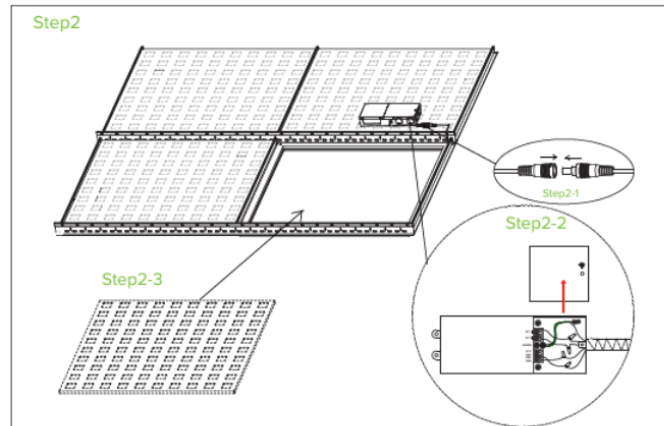
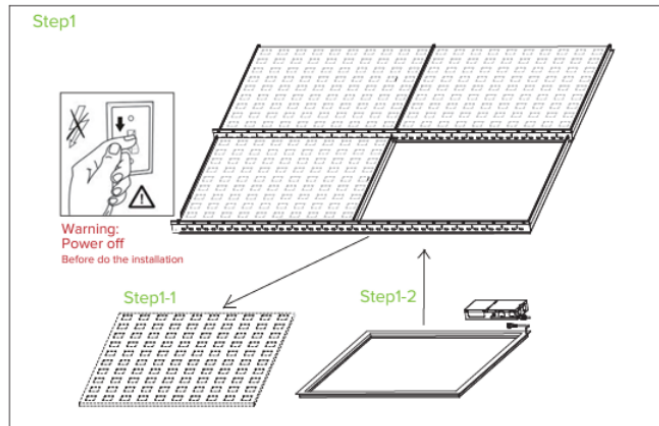
- Input voltage:120-277V
- Operating frequency: 50/60Hz
- Power factor:>0.95
- Ambient temperature range: -20°C ~+45°C
- Color Temp:3000/3500/4000/5000/6500K
- Dimmable:0-10V dimming
- THD:<10%
- IP Rating:IP40
- CRI: >80
- Beam angle:120°

QUALITY CONTROL

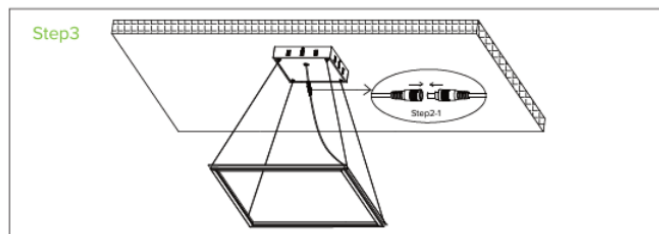
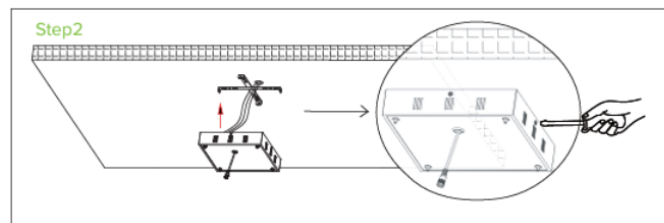
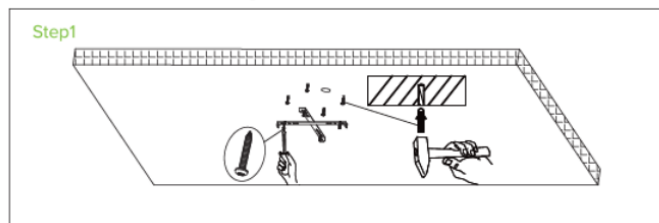
- All fixtures are designed, fabricated, assembled, tested, packaged and shipped from RENOVA's manufacturing facility in Warwick, RI (USA).

Installation Instructions

Recessed Mounting



Suspended mounting



Step 1: Fix the bracket of the canopy to the ceiling;

Step 2: Put the driver into the canopy and connect the AC input wire, then dimming wire; align the canopy horizontally upwards with the 4 holes of the bracket and screw tightly.

Step 3: Fasten the 4 lifting ropes to the 4 holes at the light fixture and then to the 4 holes at the canopy,latch on;then plug in the male-female connector of the driver and light fixture, installation complete!

Warning:

Make sure all the power is off before installation. All the installations are required to be done by professionals.